

# Wealden Scoping Exercise

## 8-13 year olds

Research into the services, issues and needs to inform  
the Wealden Local Strategic Partnership.  
Commissioned by the Youth Development Service  
(East Sussex County Council)



## **Contents of report**

- Section 1:**        **Introduction and focus of the research**  
Focus of the research  
Reasoning  
Process
- Section 2:**        **Current context**  
The purpose of Prevent and Deter  
Other documents Youth Development Services
- Section 3:**        **About Wealden:**  
Young People in Wealden
- Section 4:**        **Young people in Wealden as offenders**  
Risk factors for young people becoming and staying offenders  
Perceptions of Crime across Wealden that directly affect young people  
Perceptions of Anti-Social Behaviour in Wealden
- Section 5:**        **Contact information for Scoping Exercises**
- Section 6:**        **Mechanisms to reduce Anti-Social Behaviour including under age drinking and smoking in Wealden**
- Section 7:**        **Responses from the research: Feedback from Young People interviewed**
- Section 8:**        **Developments and Priorities identified by partner agencies**  
Developments identified by Crime and Community Safety Workers  
Developments identified by providers of services for young people
- Section 9:**        **Examples of projects that have been tested in other areas and could be delivered across Wealden**
- Appendices:**     **Tackling Anti-Social Behaviour in Wealden Questionnaire etc.**

### **Section 1: Introduction and focus of the research:**

The Youth Development Service has commissioned research to inform the Wealden Local Strategic Partnership about community safety, Anti-Social Behaviour and the needs of 8-13 year olds as victims and offenders of crime. The report will also look at existing provision for this age group and the gaps in provision and areas of potential development (including community based services and intergenerational projects).

#### **Focus of the research:**

Young people ages 8-13, access (particularly in Rural Wealden), citizenship and diversionary activities.

#### **Reasoning:**

The East Sussex County Council funded Youth Development Services and Connexions focus on 13-19 year olds. Under 13's are not seen as a priority for specific service provision. Evidence describes young people as "at a loose end" and engaging in little meaningful activity. For some young people this leads to Anti-Social Behaviour and/or underage substance misuse particularly alcohol.

#### **Process:**

To produce a scoping exercise using multi-agency input to identify creative ways to engage young people in activities that will benefit the wider community as well as themselves. The option appraisal would include identifying the possibilities for involving voluntary and community sector providers.

The scoping exercise focused on the areas around the community colleges in Wealden, Uckfield, Wadhurst, Heathfield and Crowborough as well as Hailsham. Previous research from AIRS had focused on Parish councils and provided a map of services for children aged 10-17. This research does not repeat this focus.

**Crime data** was used to ascertain the experiences young people of Wealden as victims and offenders of crime. This information provides a factual basis to this report. Anecdotal information from those interviewed was also included in the report.

**Analysis of specific information already produced** on services for this age group was reviewed, and investigated to provide a snap shot of the services currently available.

**Existing Service Providers were contacted and interviewed** to ascertain the nature of the services they provided. A significant number were then removed from the list as they did not provide a service for 8-13 year olds.

**Youth Service Managers in the Community Colleges** were interviewed about their provision for this age group (if any), issues that have come to their attention from the young people who attend their services and schools. In addition they were asked about their knowledge of partnership working with local agencies that provide services for 8-13 year olds.

**Young people within the age range of this study** who attended YDS (Youth Development Service) provision and/or community colleges were invited to participate in informal focus group discussions. Standard questions were asked of all of the young people about the area they live in, how they spend their time, their relationship with other people in the community and how safe they feel.

**Service providers and partners** in community safety and diversionary activities for this age group and 13 years plus, were interviewed to identify the needs and issues for these young people, interagency and single agency interventions and proposals for future work were then analysed.

**Research was made into examples of diversionary activities** that could engage young people at risk of involvement in anti-social behaviour and increase their contribution within their community.

**This report** provides a summary of the data and information collected as not all of it could be included. Source information will be summarised to provide background information for commissioning agencies. In addition written feedback from young people should be provided to their existing service providers to help them develop proposals for future funding. More importantly the decisions of the Wealden Local Strategic Partnership and information about future developments should be fed back to the young people who participated.

A significant number of people have contributed to the information used to complete this report and their input is appreciated. It is a testament to the fact that young people want to have a voice in developments and services that they can openly and enthusiastically talk about their issues, ideas and needs. Thanks and appreciation goes to all of those who gave their time to be interviewed.

## **Section 2: Current context:**

All the research, crime data, interviews and anecdotal information demonstrate that levels of Anti-Social Behaviour and crime across Wealden are low and hardly ever involve 8-11 year olds and only sometimes 11-13 year olds. However where it does exist it causes significant distress to young people and other residents of Wealden.

Many agencies provide good quality services and interventions already but they are targeted at young people aged 13 plus. There is a significant commitment amongst current providers of services for young people and community safety to provide diversionary and support activities and interventions for this younger age (8-13 year olds).

The Home Office has recognised the benefits to the community and the young people themselves of working with 8-13 year olds. Every Crime and Disorder Reduction Partnership (Safer Wealden Partnership for this area) has had to implement the Prevent and Deter strand of the Home Offices Prolific and Other Priority Offenders Strategy. Youth Offending Teams have taken the lead on these structures and groups have been set up across Wealden to implement the guidance.

### **The purpose of Prevent and Deter is to:**

- prevent the most at risk young offenders from becoming the “Prolific Offenders” of the future through appropriately targeted Youth Justice and community-based interventions to tackle the risk factors that may drive their offending behaviour
- prevent children and young people from becoming involved in criminality, by identifying and targeting those most at risk or on the cusp of offending with appropriate intervention programmes.

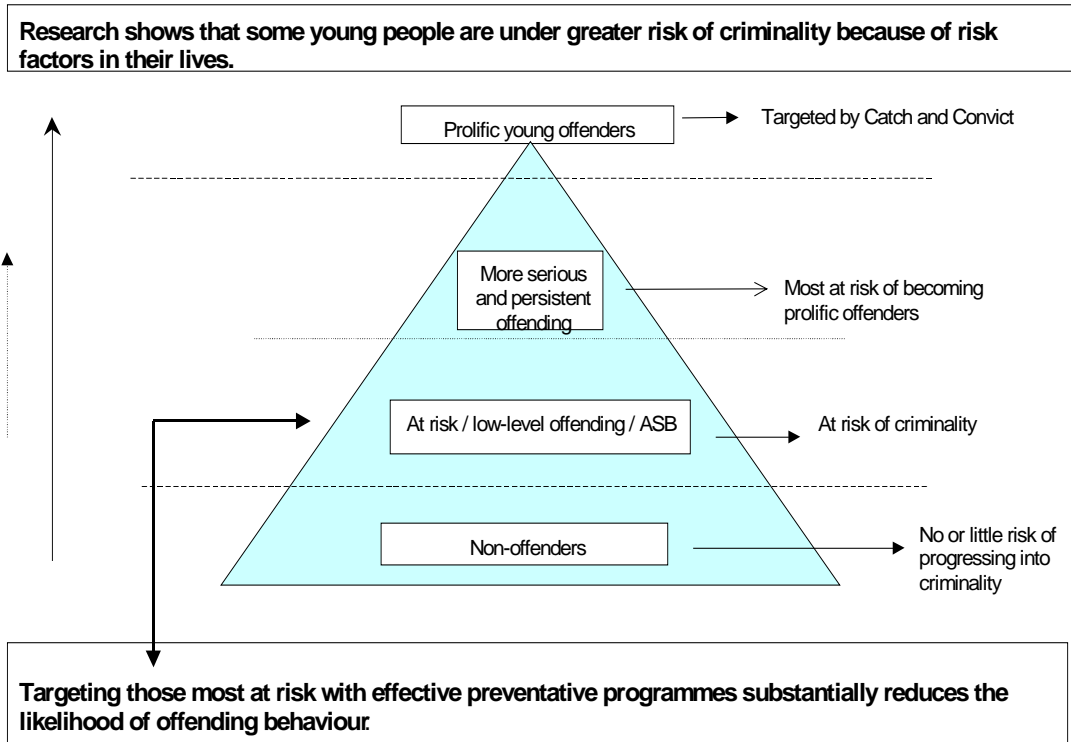
Prevent and Deter work provides an opportunity to work specifically with 8-13 year olds even though the Criminal Justice system works with young people aged 10 plus. This national political context provides the prospect for Wealden to develop new and support existing innovative diversionary and support programmes for a currently under resourced age range of 8-13 year olds.

Partnership working in Wealden (Police, Youth Service, Schools and Community Colleges, Voluntary and Community Sector, Churches, Local Authority, Safer Wealden Partnership etc) can provide interventions at each stage of the Prevent and Deter Framework (overleaf Figure 1).

The guidance gives specific responsibilities to the Safer Wealden Partnership to “involve themselves with the work of other agencies focused on those **on**

**the cusp** of offending or engaged in lower-level offending to prevent them from becoming more active young offenders". In addition "CDRPs should concentrate on the relatively small number of young people who are clearly at most risk of becoming prolific offenders in the short to medium term if action is not taken".

**Figure 1 : The Prevent and Deter Framework**



*(Taken from the Prolific and Other Priority Offenders Strategy – Guidance for Youth Offending Teams November 2004)*

Most of the diversionary intervention identified within the guidance e.g. Positive Activities for Young People; Positive Future etc were not targeted at 8-13 year olds. Wealden's response to this agenda will need to be broader than these programmes and should include projects to:

- promote young people's identification with their community,
- positive perceptions of young people within their communities,
- reduce Anti-Social Behaviour,
- build relationships with the wider community and in particular intergenerational projects.

**The Youth Development Services Youth Conference Report (October 2003)** records the issues and needs identified by young people at this event. Young people of Lewes and Wealden (Page 22) identified the following issues:

- Young People do not know what services are available or how to access them, and there are a lack of facilities (bowling, cinema, youth clubs etc.) and events of interest. There is little information about when events are on and it is difficult to travel to them.
- Boredom causes young people to drink.

Although only 16% of the conference attendees were within the age range of this research the views expressed by young people who have been spoken to as part of this research are very similar.

Most young people interviewed seemed quite aware of help line and support services they could access and were familiar with message and communication email systems as well as information services. However they identified their parents as the primary and first people they would go to if they had a problem

They raised the cost and lack of availability of transport as a major issue both for them to access social activities and the existing youth provision. Transport was also an issue as the majority of their friends were made at the community colleges they attended, as the catchment areas are quite large and cover rural as well as the urban area where the college is based they often only saw friends at school. This led to some feelings of isolation outside school. They also wanted to be independent from their parents and would prefer to travel without them, however, the cost of bus travel prohibited this for some young people.

They did not identify alcohol as a problem for them although some did recognise older young people's behaviour as a concern to them and other members of the community when asked what made them feel unsafe. Through this research service providers have the impact of young people using alcohol and cannabis on the community in which they work. A small number of under 13's are involved in these activities however the majority are older and outside the remit of this group.

Having said this, a significant level of concern was expressed by service providers about the negative influences of older young people on the upper end of the age group in this report (12-13 year olds) especially amongst young women.

The young people interviewed identified similar activities to those at the conference. Fuller details of their views can be found in section 6.

*Recommendation: Interventions need to reflect the following issues – access to affordable transport, the importance of age appropriate friendships, barriers to maintaining friendships, and reducing access to and use of alcohol and nicotine.*

Youth Development Services of East Sussex – Annual Business Plan 2003-2006 includes 4 key objectives that although written for work with 13-19 year olds could directly relate to this research:

- To raise awareness of the health implications involved in alcohol and tobacco misuse.
- To enable citizenship and participation as core elements of the Youth Development Service curriculum.
- To train staff to understand and to deliver a citizenship curriculum.
- To establish working partnerships with other deliverers of the citizenship agenda.
- Provide training opportunities for those workers involved in community safety.
- To maintain and further develop links with Crime Reduction Partnerships.
- To inform and contribute to the local Community Safety Strategy in relation to young people.
- To identify and pursue specific funding to support youth crime diversion projects.
- To develop programmes supporting and empowering young people who have been victims of crime.

These objectives could form the basis of future multi-agency work by local agencies with 8-13 year olds. The research shows a commitment to providing services that meet the needs of the young people (8-13).

Most "Youth Services" felt happy to extend their services to be coterminous with the community college they worked with. Other who had already extended their remit were happy to develop any current work to bridge the gap between Junior and Secondary school and recognised the benefits of transitional work to engage with young people at as early a stage as possible. In addition the police and other agencies wished to work in partnership with Youth Services and agree programmes of work for this age group.

***Recommendation:** More detailed work needs to be undertaken to demonstrate the benefits of transitional work and after school and homework support. Diversionary projects between Police Anti-Social Behaviour workers and the Youth Service should be developed in partnership.*

### Section 3: About Wealden:

Half the population of Wealden live in the five main towns; Crowborough, Hailsham, Heathfield, Polegate and Uckfield. Wealden District covers 323 square miles in an Area of Outstanding Natural Beauty. In 2001 Census the population was 140,021 and is estimated to increase to 151,400 by 2011. 12% of the population is age 5-14 years old. If the population is compared to the national average Wealden has more people over the age of 50 and less than the average of under 20s. In addition the picture changes from ward to ward. Crowborough East and Uckfield Ridgewood both have 34% of their population under age 25.

Although the average weekly wage in Wealden (2003-04) is £414.00 per week (£21,528 per annum). The poorest areas in Wealden are in Hailsham.

#### Young People in Wealden:

Locally and nationally young people have been identified as more likely to be victims as well as offenders of crime. 7% of all victims of crime (366) across Wealden (in 2003-4) were under age 17. They were victims of 1,012 crimes during the three years to 2003-4.

The total number of crimes suffered by those young people of Wealden aged 13 years and under is 281. Violence Against Person (47.7%) and Theft (37.7%). These figures mirror those for all young people aged up to 17 years old.

Offence/Age	Under 10	10	11	12	13
Violence Against Person	26	11	15	31	51
Sexual	3	1		2	10
Robbery			2	1	3
Burglary Dwelling					
Burglary Non Dwelling				1	4
Vehicle Crime	2		1		
Theft	6	6	36	27	31
Fraud & Forgery					
Criminal Damage	2	1	2		3
Other	1		1		1
Total	40	19	57	62	103

Hot spots produced from crime data show that the crime is concentrated around community colleges in particular Hailsham 22% of all crimes (plus Hailsham High Street and the Lagoon Leisure Centre). Other areas identified as less prominent but still significant were Uckfield Community College,

Crowborough (Fernbank Centre and Beacon Community College) and Polegate.

Place where violent and theft crimes took place	%
Street	32
Schools/Colleges	24
In a dwelling	17
Parks & Open Spaces	8

Offences (all ages up to 17) peaked around 3pm in term time, and September, June and January had the highest monthly totals. Mobile phones were the most common items stolen and often the only item, although cash, purses, wallets, cash cards, and bikes were also stolen.

Significantly most offenders where they were identified were within five years of the age of the victim.

#### **Section 4: Young people in Wealden as offenders:**

Young offenders commit most crimes however Violence Against a Person, Theft and Criminal Damage are the most prolific crimes. Most offenders are male, live in Wealden and 41% committed crimes in the wards they live in, most travelled less than 1 kilometre from their home.

Offence/Age	Under 10	10	11	12	13
Violence Against Person	3	3	7	28	50
Sexual				1	1
Robbery				2	1
Burglary Dwelling			1	2	
Burglary Non Dwelling				4	3
Theft of a Vehicle					4
Theft from a Vehicle					
Theft other		2	14	11	28
Fraud & Forgery				1	
Criminal Damage	7	5	7	18	24
Drugs					
Other					2
Total	10	10	29	67	113

61% of all offences were committed at schools across Wealden, theft and criminal damage being the most common. With Hailsham, Uckfield and Beacon Colleges being the highest (in that order).

#### **Risk factors for young people becoming and staying offenders:**

Truancy and exclusion from school have been identified as contributory factors. Wealden had 30% more pupils in 2002-3 than Lewes and 49% more than Eastbourne. However, they had less exclusions than both areas. Wealden had 379 exclusions (in 2002-3) compared to around 600 for each of the other two areas.

East Sussex Youth Offending Team (YOT) work with young people aged 10 and over. The YOT use a profiling tool (Asset) to assess the risk of young people repeating their offending behaviour. Lifestyle and thinking and behaviour have been proven to directly affect young people's conduct. Each of these areas need to be considered when looking at the development of diversionary activities.

**"Lifestyle:** Lack of age-appropriate friendships, associating with predominately pro-crime peers, absence of non-criminal friends, non constructive use of time, participation in reckless, inadequate legitimate personal income, other problems e.g. gambling, staying out late at night.

**Thinking & behaviour include:** lack of understanding of immediate and longer term outcomes, a need for excitement (easily bored), giving in easily to pressure from others (lack of assertiveness), poor control of temper and inappropriate self-presentation. Behaviour factors which are assessed include: destruction of property, aggression towards others (e.g. verbal, physical), sexual inappropriate behaviour and attempts to manipulate others.

**Family and Personal Relationships** have the next strongest association with offending e.g. families participation in criminal activity, heavy alcohol abuse, drug or solvent abuse, lack of communication, inconsistent supervision/boundary setting, experience of abuse, witnessing other violence in a family context, bereavement or loss and difficulties with care of his/her own children." (CADDIE report)

### **Perceptions of Crime across Wealden that directly affect young people:**

In the Safer Wealden Partnerships Public Perception Survey carried out during 2004, 31% of the people surveyed said "young people causing a nuisance" was the most concerning issue. 60% of those who said they were worried about Anti-Social Behaviour (in the last 12 months) rated "young people causing a nuisance" as a problem in their area. Other items that people worried about (more than 10% of those surveyed) were car break ins/vandalism, burglary dwelling, and vandalism.

Where people surveyed had worried about crime and Anti-Social Behaviour they were more likely to have identified problems in their area/neighbourhood as more significant than other areas. However 61% had not worried about any crime or Anti-Social Behaviour in the last 12 months. Worry about crime was relatively low and people generally saw their area/neighbourhood as better than the rest of the county (72%) and the district (50%).

Those residents surveyed said that the top three causes of crime in Wealden were:

- Young people with nothing to do.
- Alcohol related reasons.
- Not enough Police presence.

### **Perceptions of Anti-Social Behaviour in Wealden:**

However Anti-Social Behaviour is not affecting everyone across Wealden. 1 in 8 people have experienced Anti-Social Behaviour in the last 12 months. There is also evidence that Anti-Social Behaviour is more likely to be experienced by people living in towns (17%) compared to those living in rural areas (3%).

The most common crimes and Anti-Social Behaviour in 2003-4 were:

- Young people causing a nuisance (9%)
- Having a car broken into/vandalised (6%)
- Vandalism or damage to property (4%)
- Motorcycle nuisance (4%)

31% respondents said that "young people causing a nuisance" is serious or quite serious. 51% residents (surveyed) of Hailsham, 48% Heathfield and 46% Herstmonceux/Horam identified that young people were a particular problem in their area. ***In Hailsham residents identified "more diversionary activities for young people" as their top priority for service developments.***

Vandalism was identified as being a problem in Herstmonceux, Horam and Hailsham.

Three out of the four top priorities identified by all residents surveyed were connected to young people and dealing with Anti-Social Behaviour:

***More diversionary activities for young people, improving systems to discourage Anti-Social Behaviour and better information on enforcement action taken e.g. Anti-Social Behaviour Orders (ASBOs) and Acceptable Behaviour Contracts (ABCs).***

## Section 5: Contact information for Scoping Exercises:

A variety of sources were used to produce an initial list of potential services for 8-13 year olds across Wealden. Existing mapping exercises, websites, county and local authority information sources, word of mouth, referrals from one agency to another agency and lists of services were sifted and information confirmed. Originally over 50 services were identified and others were added during the process and a significant had to be removed from the list because they age group they served was outside the remit of the report.

The list below now represents a snap shot of the services currently supporting this age group.

Name of organisation	Time of activity
<b>Crowborough</b>	
1414 Crowborough Squadron Air Training Corps (ATC)	Mon-Frid 7-9.30pm
Boys Brigade 1 <sup>st</sup> Crowborough Company	Friday United Reformed Church 5-11s 6.15-7.30pm 11-18s 7.30-9.30pm
Sussex ACF Training Centre	
Brownies Jarvis Brook	Thurs 5-6pm Guides Friday 7-9pm
Guides Jarvis Brookes	Brownies Fri 6-7.30pm Guides 7-9 pm Thurs
Guide Association Crowborough District	Brownies 7-10 Guides 10-15 yrs
1 <sup>st</sup> Crowborough Scout Group	5 nights per week
Crowborough Youth Theatre	Wed evenings term time 8-11 7-8pm
Beacon School Youth Club	Monday nights
Clued-up Info Shop for young people.	Tues 2-7pm Thurs & Friday 2-5pm
Forest Row Youth Centre	TBC
Beacon Youth Club	Various including detached work

<b>Name of organisation</b>	<b>Contact Name and time of activity</b>
<b>Hailsham</b>	
1 <sup>st</sup> Hailsham Brownies	7-10.5 years
2 <sup>nd</sup> Hailsham Brownies	
2 <sup>nd</sup> Hailsham Cub Pack	Activities most evenings
Hailsham Friday Badger Set	(St.Johns Ambulance) Friday evenings
Hailsham East Community Trust	Various
Infopoint Hailsham 11-25 year olds	Various including joint work based at square
Hailsham Christian Fellowship	Sundays and group work
Hailsham Youth Centre	Various

<b>Name of organisation</b>	<b>Contact Name and time of activity</b>
<b>Heathfield</b>	
Huffle Nursery School	(top age 11) 8-6pm weekdays
1 <sup>st</sup> Heathfield Scout Group	Cubs 8-11
Guiding in Heathfield, Horam and surrounding villages	Various
Kings Church	8-9pm Friday 9.30-10.45am Saturdays
Heathfield Youth Centre	Various

<b>Name of organisation</b>	<b>Contact name and time of activity</b>
<b>Uckfield</b>	
Manor Close After School Club	After school until 5.45pm
2530 Uckfield Squadron	Mon-Thurs 7-915pm
Nautical Training Corps East Sussex Reg	Various Sessions in Uckfield
Uckfield Youth Centre	Various

<b>Name of organisation</b>	<b>Contact name and time of activity</b>
<b>Wadhurst</b>	
1 <sup>st</sup> Wadhurst Brownies	Girls age 7-10
2 <sup>nd</sup> Wadhurst St.Peter & St.Pauls Brownie Pack	tbc
Wadhurst Youth & Community Centre	Various including Making Spaces Wednesdays 3.30-5pm

<b>Name of organisation</b>	<b>Contact name and time of activity</b>
<b>General</b>	
Alfriston Youth Club	Danny Wheaton
COPEs Action in Rural Sussex  (COPEs) Children's Outreach Phone & Email Support Copes	Ms Tina Jackson
East Sussex County Federation Of Young Farmers Clubs (ESYFC)	Mary Masters  10-25 year olds
Ringmer & Lewes District Young Farmers Club (YFC)	Mary Masters 10-26 year olds Thurs 7-8.30pm, fortnightly Ringmer Scout Hut
1 <sup>st</sup> Mayfield Scouts & Guides	Gavin M Ross
Youth Clubs Sussex	Mr D Griffiths (Resources Worker)

The list excluded sports clubs as they are too numerous to get a comprehensive list. However feedback from young people about how they spend their time illustrates the importance of sport clubs for exercise and social integration particularly within the rural communities.

Most agencies surveyed were happy to continue with their existing provision. Those who wished to be able to develop services for 8-13 year olds either needed funding to continue existing provision e.g. D-Café (Hailsham) and Diversionary project (Wadhurst) both of which had evaluation to prove they were effective both with the young people and meeting funders' objectives, or wished to develop and extend existing provision to meet the needs of this age group.

Services were aware of the needs for Child Protection and parental consent procedures. However few had considered environmental policies and some would benefit from additional support and

training to comply with all policies and procedures and develop partnership work.

## **Section 6: Mechanisms to reduce Anti-Social Behaviour including under age drinking and smoking in Wealden:**

Anecdotal evidence of young people using alcohol has come to agencies attention. There is clear evidence nationally and locally that young people involved in drinking alcohol (and to a much lesser extent using other substances) are more likely to engage in behaviour considered to be Anti-Social.

During and prior to this research concern was expressed about the level and amount of alcohol use by young people in public places particularly within the rural areas of Wealden. The research carried out within this report has identified the following:

- The majority of these incidents appear to be carried about by those over the age of 13.
- There is a significant difference in the behaviour of 8-11 year olds and 11-13 year olds.
- Older young people act as role models for 11-13 year olds who have limited age appropriate friendships.
- Siblings and family influence on behaviour.
- Alcohol is confiscated and disposed of by PCSOs (Police Community Support Officers) (young people are given a stop form and letters sent to parents).
- Where off licences and shops have been identified as selling alcohol to under age children every effort is made by Trading Standards and the Police to reduce the sale.
- Some tension exists between the approaches of the Police and Youth Services.

**Recommendation:** *Developments should include exploration of joint working and an agreed multi-agency protocol for working with 8-13 year olds to reducing alcohol use and smoking from both a health and legislative approach.*

National research suggests the following elements should be included in a **strategy to address underage drinking in public places:**

- The Police confiscates alcohol from under-age drinkers in public places.
- Prosecute adults (and older Young People) who purchase alcohol for under-age young people.
- Provide advice to off-licences.
- Encourage off-licences and other premises to operate Proof of Age Schemes.

- Test purchasing at off-licences and general stores, and powers to fine or close premises that sell alcohol to under-age people.

*However: evidence from young people and all of the key agencies confirm that parents are the primary providers of alcohol to young people in rural areas, either by purchasing alcohol (especially alco pops) or having quantities of alcohol at home that young people have access to.*

**Recommendation:** *Reducing access to alcohol provided by parents is an extremely difficult issue for the agencies in Wealden to address without multi-agency and potential longer term approaches to change attitudes to alcohol and of necessary enforcement.*

Mechanisms to **identify and target areas** in which young people congregate to drink alcohol need to be delivered. This includes measures such as:

- Gathering information about where young people congregate and obtain alcohol.
- Cutting back trees and bushes that provide areas where young people can drink alcohol without being observed.
- Improving street lighting.
- Targeting patrols by the Police, neighbourhood wardens and PCSOs.
- Establishing and enforcing byelaws creating "alcohol free" zones.

PCSOs across Wealden are working to engage with young people to reduce alcohol use, smoking (mostly tobacco but some cannabis smoking has been identified but this is primarily limited to older young people) and other Anti-Social Behaviour. PCSOs have been building relationships with young people in the town or village they cover. In addition they confiscate and dispose of alcohol and cigarettes, and they may issue young people with a stop form, collect their name, age address etc. and send their parents a letter. In the Police and PCSOs experience it is extremely rare to need to confiscate alcohol from under age 11s. ***Hot spots for alcohol consumption, smoking, and some Anti-Social Behaviour are in Uckfield and Heathfield. Buxted previously was a problem as there was not a manned Police station there but this has been addressed by a PCSO working there.***

Agencies can also **work directly with young people and their parents/carers** to help prevent under-age drinking. These include:

- Youth outreach work, involving Youth Workers and Health Workers.
- Provision of activities for young people, including venues where young people can meet.
- Educational activities with young people, including work in schools and youth clubs, (including Schools Liaison Officers).
- Educational activities with parents/carers.

- Benefits of the Schools Intervention Officer roles, young people recognise and build positive relationships with such officers.
- A wide range of sporting activities across Wealden that 8-13 year olds readily engage with.
- Uniform groups and church groups provide the backbone of provision for this age group.

Strategies to prevent under-age drinking in public places usually require different agencies, such as Local Authorities, Primary Care Trusts, the Police, Youth Services and licensees to work together to address the problem. Effective strategies include a range of measures that incorporate educational, preventative and enforcement approaches.

**Recommendation:** *Wealden needs to operate strategies at two levels. Measures which are aimed at all young people and, then targeted measures aimed at particular geographical areas or groups of young people.*

Wealden needs to recognise the significant role that churches and uniform groups play in the provision for young people locally. Also that young people feel able to access a wide range of service that are not necessarily focused on their age group, have a religious content and are not part of an educational or personal development "programmes" but are about sporting activities and being a safe place to meet friends, talk and have fun.

The young people that were interviewed identified parents as the main source of support and advice if they had problems. They did not necessarily recognise a need at this time for more issue based support services – although they knew all about them and where to access them.

There are examples of existing initiatives that are well received by young people such as Making Spaces at Uplands, lunch club at Uckfield and CDRP funded work De cafe for Diplocks young people in Hailsham, "Junior" Youth provision at other YDS services. There are a number of skilled workers currently working within ESCC Youth provision who can work effectively with young people aged 11 plus. Young people appear to want to engage with agencies that traditionally provide services for those aged 13 plus, though funding restrictions do not always accommodate this.

## Section 7: Responses from the research: Feedback from Young People interviewed

Question/venue for focus group	Heathfield Youth Centre Youth Club attendees (Heathfield)	Uckfield Youth Centre – Lunch Club members (Uckfield (Manor Park & Ridge wood), Crowborough & High Hurst Wood)	Uplands Making Spaces (Wadhurst, Flimwell, Tunbridge Wells, Frant)
<b>What is good about living in your town or village?</b>	<ul style="list-style-type: none"> <li>• Football pitches</li> <li>• Not big and can walk about</li> <li>• Live near friends</li> <li>• Small (2 people)</li> <li>• Sports stuff – Skate Park, football, green, cricket, BMX, full suspension jump, mountain biking</li> <li>• Can do stuff on your own</li> </ul>	<ul style="list-style-type: none"> <li>• Lots of space (village)</li> </ul>	<ul style="list-style-type: none"> <li>• There are lots of things to do in Tunbridge Wells</li> <li>• Recreation Ground</li> <li>• Quite in village</li> <li>• Nice park in Tunbridge Wells</li> </ul>
<b>What is not good about living in your town or village?</b>	<ul style="list-style-type: none"> <li>• There is no inside space when the weather is not good like a swimming pool or cinema</li> <li>• Need indoor activities –bowling</li> <li>• School bus is crowded- older ones smoke on it, then spit on you (year 10 plus)</li> </ul>	<ul style="list-style-type: none"> <li>• Nothing to do a small village with 1 pub and a village Hall that provides for playgroup age</li> <li>• Too many people but nothing to do (Crowborough)</li> <li>• Too many houses and not enough shops.</li> <li>• Hardly anywhere to play unless go to youth club</li> <li>• Town is too narrow, no good sport shops</li> </ul>	<ul style="list-style-type: none"> <li>• Nearly all argued with their neighbours – but sometimes got on well with them.</li> <li>• Very noisy in town</li> <li>• No buses, expensive, parents need to drop young people off</li> </ul>
<b>What makes you feel unsafe?</b>	<ul style="list-style-type: none"> <li>• There are some gangs</li> <li>• Do not feel safe near the tunnel at sometimes of day</li> <li>• People in the tunnel, cleeks, on bikes etc.</li> <li>• 16,17,18 year olds on motor bikes</li> </ul>	<ul style="list-style-type: none"> <li>• Some older kids cause problems</li> <li>• Nothing else mentioned felt fairly safe</li> <li>• Village can be quite dark</li> <li>• Young people throwing items at houses etc.</li> </ul>	<ul style="list-style-type: none"> <li>• Anyone whose “looking for trouble” (discussed the role of travellers within the group, they acknowledged they had had similar discussions in school)</li> <li>• Vandalism and walking from bus make feel unsafe</li> </ul>

Question/venue for focus group	Heathfield Youth Centre Youth Club attendees (Heathfield)	Uckfield Youth Centre – Lunch Club members (Uckfield (Manor Park & Ridge wood), Crowborough & High Hurst Wood)	Uplands Making Spaces (Wadhurst, Flimwell, Tunbridge Wells, Frant)
<b>What do you think of the Old People in the area think of you?</b>	<ul style="list-style-type: none"> <li>• They do not like us, when we play near their land (not on it), they have a go at us and one popped a football!</li> <li>• Visit elderly relatives – grandparents talk about strange things</li> <li>• Parents talk to them but the young people tended not to</li> </ul>	Mixed response – <ul style="list-style-type: none"> <li>• Older people do not like young people because of the noise</li> <li>• Others get on well with old people in their area</li> </ul>	<ul style="list-style-type: none"> <li>• When older people know them (young people) they get on well with them</li> <li>• Some judge all young people the same (generalise)</li> <li>• Older people look at the way young people dress and make assumptions, they see some young people behaving badly they think all young people are the same.</li> </ul>
<b>What do you do with your time? How often do you come to this club?</b>  <b>Why don't you come on other nights?</b>	<ul style="list-style-type: none"> <li>• Come here once a week on a night which has young people our age</li> <li>• The other nights are hassle</li> <li>• There has been trouble outside and the Police have been called twice it was a young people who had not been allowed in the club who had not paid in the past (the young people in the group knew them)</li> <li>• It's too expensive</li> </ul>	<ul style="list-style-type: none"> <li>• Come to Youth Club every week to play pool, table football, air hockey.</li> <li>• Not allowed to go to the Youth Club, too far away from home.</li> </ul>	<ul style="list-style-type: none"> <li>• 3 attending club for first time</li> <li>• 2 have been for 3 weeks</li> <li>• Other more than twice (some since started)</li> <li>• They liked the time to talk with friends, and the swear/charity box.</li> </ul>
<b>What do you do when you are not at school? Other things like to do:</b>	<ul style="list-style-type: none"> <li>• Basket ball (only at school) <i>although there are 2 hoops at youth club</i></li> <li>• Horse riding and rugby (out of school)</li> <li>• Football (Saturdays a team Horam/Broad Oak)</li> <li>• The shops in Heathfield are not suitable</li> <li>• Have 13 take-aways here that's all there is!</li> <li>• Go by bus to Tunbridge Wells (takes 1 hour each way £3.60)</li> </ul>	<ul style="list-style-type: none"> <li>• Football (4)</li> <li>• Rugby (5)</li> <li>• Biking/cycling around (4)</li> <li>• Play Station 2 (5)</li> <li>• Hiking (2)</li> <li>• Internet (4) including using MSN rules &amp; hotmail</li> </ul>	<ul style="list-style-type: none"> <li>• Travel to Tunbridge Wells for shopping and "messaging around"</li> <li>• Costs between 66p and £2.50 one way</li> <li>• Rieke, pilates, homework, TV</li> <li>• Rugby (4)</li> <li>• Football (2)</li> <li>• Cycling (numerous)</li> </ul>

	<ul style="list-style-type: none"> <li>return) or by parents car</li> <li>• Bus stops at about 9/10pm</li> <li>• Only 2 buses to Eastbourne on Saturdays (45 minutes each way £3.80)</li> <li>• Adults/parents take us to Eastbourne and Hailsham</li> <li>• Friday go to the Kings Church Youth Club it is free and can play football, table tennis, badminton, volley ball, dance mat, pool the ones who go are mostly year 9 but can go from year 7 to year 11.</li> </ul>		
<p><b>How much time per week outside school do you spend with: Friends, parents, grandparents, neighbourhoods etc.</b></p>	<ul style="list-style-type: none"> <li>• Most of time spent with friends it is a small enough area know everyone and can walk around.</li> </ul>	<ul style="list-style-type: none"> <li>• Spend all spare time outside school with friends</li> <li>• Evenings (TV) with parents</li> <li>• Grandparents (every day, not at all, every 3 months (live far away) often, now every 3 weeks</li> <li>• Neighbours get stressed, when young people play ball games, nearly all have a problem with their neighbours.</li> <li>• Mum, friends, and TV influence what they do</li> </ul>	<ul style="list-style-type: none"> <li>• Spend weekends and after schools with friends and parents</li> <li>• Some did not have friends that lived in home village/town (as friendships were made at school)</li> <li>• Speaks to friends via internet</li> <li>• TV, X Box, Bike Rides, Football</li> </ul>
<p><b>What would you like to do but you cannot?</b></p>	<ul style="list-style-type: none"> <li>• Swimming – raising money for a leisure centre locally</li> <li>• Cinema</li> </ul>	See below	See below
<p><b>What makes you unhappy?</b></p> <p><i>(homework seemed to be a stressful experience for a number of young people)</i></p>	<ul style="list-style-type: none"> <li>• At Heathfield Community College they give us too much homework, ½ hour for every piece and 3 or 4 pieces at least. The work is supposed to take you ½ hour but you have to take as long as it takes to finish the work - if you do not finish it then the teachers complain. It is not fair. if you only do it for half an hour and do not finish they say you did not do half an hours work</li> </ul>		

Question/venue for focus group	Heathfield Youth Centre	Uckfield Youth Centre	Uplands Making Spaces
<b>Who would you talk to if you had a problem?</b>	<ul style="list-style-type: none"> <li>Majority said parents (<i>without hesitation</i>)</li> <li>Some said friends</li> <li>They would not talk to the workers at the youth club as they did not know them well enough (<i>some were new but most had been attending for about a year</i>)</li> <li>They knew about Frank and would not call.</li> </ul>	<ul style="list-style-type: none"> <li>They had a talk from COPES and remembered this (Key rings with phone number)</li> <li>Police</li> <li>Helpline in school planner (Child Line &amp; Frank)</li> <li>Most said Mum and/or Dad</li> <li>Talk to someone they did not know</li> <li>Best friend</li> </ul>	Parents, grandparents.
<b>How can young people play a part in their community/neighbourhood? What makes a good citizen?</b>		<ul style="list-style-type: none"> <li>Be involved in community activities</li> <li>Be kind</li> <li>No one knew about the Youth Council –but seemed interested.</li> </ul>	<ul style="list-style-type: none"> <li>Should be young people on the Parish Council (listen to young people and develop services)</li> <li>Contribute to the local economy- spend money in local shops</li> <li>Would like to get a job in the future and contribute to the economy</li> <li>Uses green spaces</li> <li>Scouts</li> <li>One person did not feel that they had one</li> <li>Pick up litter, clear up campaigns</li> <li>Stop Graffiti</li> </ul>
<b>If there was funding what would you like to spend the money on?</b>	<ul style="list-style-type: none"> <li>Need football goals at the youth centre –just started a team here and there is one in Horam</li> <li>Fence needs repairing next to the youth club</li> <li>Already have 2 pitches and rugby pitches</li> </ul>	<ul style="list-style-type: none"> <li>Skate Park</li> <li>Ice skating rink</li> <li>Bike park</li> <li>Tennis</li> <li>Basket Ball hoop on Village Hall</li> <li>Quite happy in Crowborough (has lots to do, tennis, astroturf, swimming, football)</li> <li>Upgrade youth club (Uckfield) and have more things to do</li> </ul>	<ul style="list-style-type: none"> <li>Skate Park</li> <li>Mini Moto track</li> <li>Jobs for 11 year olds</li> <li>Swimming Pool</li> <li>BMX track (Penshurst “Off Road Cycling”)</li> <li>After school activities for sport (not team membership)</li> </ul>

## **Section 8: Developments and Priorities identified by partner agencies:**

### **Developments identified by Crime and Community Safety Workers:**

- Youth Club on Friday night especially in Uckfield for this younger age range.
- Joint agency work with school teachers, Police and PCSOs to confront young people about their drinking and smoking.
- Mechanism to work with Youth Development Service workers as there are conflicting agendas and Youth Workers have identified that their relationship with young people changes if they work alongside the Police and PCSOs.
- Concrete floor in Youth Shelter in Luxford Park.
- Intergenerational projects to build relationships between young and old.
- Information and communication projects (W4Y.co.uk, Copes etc).
- Initiatives and activities to encourage 11-13 year olds to have age relevant relationships with their peers.

*Protocols should be set up to find a productive way forward for more joint agency working.*

### **Developments identified by providers of services for young people:**

- Money to run existing drugs or other diversionary schemes that have lost funding or are under funded (proven projects).
- Residential and tailored programmes to work with young people on the cusp of offending behaviour.
- Junior Youth clubs within Community Colleges (the are transport issues which need to addressed for the 11-13 age group especially those who live outside the main towns).
- Flexible provision e.g. detached work, mobile projects in villages, trips, more input from community colleges (e.g. homework support).
- Recognition of the pockets of deprivation across Wealden (some can be very small areas).
- Issues in villages of older young people claiming the recreational facilities.
- Recognition that schools provide a range of after school activities especially if sports related.
- Recognition that the churches and community and voluntary groups are the key providers for this age range.
- Young people would benefit from earlier interventions with Youth Development Services rather than having to wait until age 13.

## **Section 9: Examples of projects that have been tested in other areas and could be delivered across Wealden:**

Having researched a number of options for both citizenship and crime diversion interventions the following have been recognised as good practice and may provide opportunities for further discussion within Wealden. Only two projects showed particular interest in intergenerational work and one had already tried an intergenerational history project within school and would be interested in developing more projects.

**Junior Citizenship:** Wealden District Council, Pestalozzi, and Horsham District Council.

All run half day sessions for school children (mostly age 10 and 11 year olds) to participate in a series of scenarios that provide educational and informative role play for young people to learn about safety.

Wealden District Council works with the key emergency services to provide a series of scenarios that young people enter into to assess their skills and knowledge of potentially dangerous situations. Pestalozzi are making their scheme a whole day event to include half day sessions on reducing and addressing racism.

Intergenerational projects around cooking (Healthy Eating) and History (including World War Two) have been piloted across the county. These are easy to develop within a schools or community setting. Some expertise is already within Wealden in these areas.

Schools Liaison Officers within Wealden will continue to provide input in the curriculum on the law, drugs and alcohol. They see their role as different from the PCSOs (enforcement and community relationship building) and opportunities exist for joint citizenship programme work.

**Generations as Partners (GAP) Intergenerational Project:** Age Concern West Sussex.

An intergenerational project managed by Age Concern West Sussex to establish partnerships between young people (aged 5-18 years) and groups of older people (aged 55 plus). Partnerships meet throughout the school year and share activities, interests and learning opportunities. Partnerships are two way processes enabling older partners to act as teachers as well as learners. Activities are arranged taking into account the abilities and interests of the participants, they act as a catalyst to encourage conversations and interactions between both generations.

### **Work in schools on Citizenship. Safer Stockton Partnership**

**Project Description** Work in schools in relation to citizenship issues including the anti-social behaviour role play project 'The Wall'. Reducing levels of anti-social behaviour, teaching children about citizenship within the age group of 9 - 14 years. Really good piece of equipment, which helps children to see the effects, their behaviour can have on victims.  
[www.saferstockton.com](http://www.saferstockton.com)

### **East Sussex Mentoring Service.**

**Project purpose** To enable young people to look at their behaviour and make small achievable steps towards changing it.

**Brief description** We match young people with behaviour problems with well trained voluntary mentors. They spend 1-2 hours per week, getting to know each other, identifying areas for change and working towards those changes. They can then celebrate those achieved in appropriate ways. The scheme is entirely voluntary, so that those young people that are serious about stopping offending and need support can gain extra support to identify and change the factors that lead to their offending. Obviously this is a simplistic view, but on the whole, the scheme works, with very little re-offending and many positive steps have been observed.

### **Community Graffiti Murals** Southampton City Council

**Project purpose** To improve a number of subways with a reputation for being dark and encouraging anti-social behaviour, fires and rough sleepers.

**Brief description** The Southampton City Council 'Clean Team' and local graffiti artists got together with school children in the area to produce colourful designs to cover the walls of two subways and make them more appealing to members of the public. The effects of the graffiti art designs significantly reduced the problems in the subways. As a result, the partnership group decided to extend the theme to a local shopping parade, where youngsters congregated and disturbed shoppers by playing football and generally causing a nuisance. In consultation with retailers and the young people themselves, benches where the young people gathered, were moved to a nearby park and goalposts placed alongside. The retailers and youngsters were then asked to produce designs to represent the 8 shops in the parade and 8 fine mesh security fencing panels were ordered for the graffiti artists to paint the designs on.

Since the completed panels were installed, complaints about football have dramatically decreased and retailers are much happier to open later at night without fear of anti-social behaviour.

A similar project to this is being piloted with a competition for local schools children in Rother. This scheme will run alongside a graffiti data base for identification of tags and targeting work to identify those young people producing the graffiti and work with them to reduce this behaviour.

### **Project Genie** West Sussex County Council

**Project purpose** To reduce graffiti and improve local amenities for young people

**Brief description** Project Genie employs two youth workers for 18 hours per week as part of the County Youth Service's 'Interact' team. This is fundamental to the scheme as feedback from the young people on the street was essential to developing alternative activities, including the control of the use of graffiti in art based projects.

Two mobile skateboard ramps were built to a specification designed by the young people and are used frequently in youth clubs throughout the area.

A 'Wipeout' day was held with 70 volunteers, including over 40 young people joining in to paint out graffiti in the area.

Police enforcement has also been essential to reinforce the message that graffiti damage is unacceptable. Over 35 offenders have been arrested and over 150 individual cases of damage detected.

New areas of graffiti have been reduced, although 'legacy' graffiti remains.

A good practice toolkit has been produced based on all lessons learned from the project.

### **Operation Calm** Lancashire Police

**Project purpose** To combat underage drinking and associated juvenile nuisance, crime and disorder

**Brief description** OPERATION CALM was designed to combat the identified problem of under-age drinking in public places across Leyland and the accompanying juvenile nuisance, crime and disorder.

Police records and consultation with outside agencies, members of the public, their local representatives and community groups identified 'Hotspot' areas. A response was formulated which would approach the problem on three fronts:

The identified 'Hotspot' areas were targeted by high profile police patrols accompanied by partner representatives. The youths were approached in a non-confrontational manner. Officers were encouraged to engage with the youths and obtain their views, express the concerns of local residents and agencies, spread awareness of the consequences of anti-social and criminal behaviour and promote alternative activities where available.

All off-licensees were visited by high profile patrols to support staff and deter youths gathering nearby and attempting to obtain alcohol. A leaflet campaign whereby leaflets containing information on the operation and recent changes in legislation regarding the supply of alcohol to minors were offered to all off-licensee customers at this time.

Residents in the 'Hotspot' areas were given an opportunity to discuss their concerns throughout the operation, with a view to providing reassurance, removing the fear of crime and nuisance and promoting tolerance. The response was reviewed on a weekly basis to ensure the aims and objectives continued to be addressed, the correct areas were being targeted and monitor any displacement.

At the end of the operation, an assessment of police records revealed a 15% reduction in complaints about juvenile nuisance compared to the same period the previous year. This analysis was later extended for an extra two and a half months after the end of the operation to see any longer term benefits; this revealed an overall reduction of 19%.

Similar Schemes operate across Sussex (such as operation Quench).

**ASBO/ABC Support Worker:** Safer Rother Partnership is piloting a worker trained to undertake support and group work with young people, who have an ASBO or ABC and their parents and siblings to reduce breaches in ASBOs or ABCs, source and support their involvement in diversionary activities e.g. youth work, educations, sport, employment etc. In addition they take referrals for one to one, or group work with siblings of young people involved in crime and other young people on the cusp of criminal and Anti-Social Behaviour.

A Multi-Agency Diversionary Projects involving East Sussex Fire and Rescue Service, YOT, YDS and Community Organisations are being piloted across the county.

## **Appendices:**

### **Tackling Anti-Social Behavior in Wealden**

**A series of innovative Ideas have been introduced on the streets of Wealden to improve the quality of life for everyone. Here is just a flavour of the projects headed by The Safer Wealden Partnership.**

#### **POLICE COMMUNITY SUPPORT OFFICERS**

Police Community Support Officers (PCSOs) work in pairs providing a high visibility uniformed presence throughout Wealden and the rest of Sussex. They deal with anti-social behaviour, minor offences and support front line policing. They do not have the power to detain or arrest. PCSOs come from a variety of backgrounds and have helped to mould the position into something extremely important to the communities of Wealden and the whole of Sussex. For further details, or to speak with your local PCSOs on **0845 607 0999**. Web Site: <http://www.sussex.police.uk>

#### **POLICE SCHOOLS INTERVENTION OFFICER**

This pioneering post allows head teachers to deploy a police officer to tackle acts of antisocial behaviour in and around Wealden's secondary schools. The officer also helps assist with bullying, minor crime and home visits while also encouraging good citizenship.

#### **SPECIALIST ANTI-SOCIAL BEHAVIOUR CO-ORDINATOR**

This liaison role ensures effective multi-agency working on cases of anti-social behaviour and nuisance. The officer also collates information and evidence against prolific offenders so that action can be taken.

To contact the Wealden Anti-Social Behaviour Co-ordinator call:

**08456070999** .

#### **THE HEATHFIELD & WALDRON COMMUNITY WARDENS**

The Community Wardens are working with the community to help reduce anti social behaviour, improve the environment and help the police to deliver community based services. They assist in dealing with graffiti, abandoned and untaxed vehicles.

One of their roles is to be involved with mediation and youth services.

#### **WEALDEN DISTRICT COUNCIL ESTATE WARDENS**

The Estate Wardens work throughout the district for Wealden's housing department. They are there to maintain community safety for residents on Council housing estates, through visible patrols. The wardens are involved with anti social behaviour, abandoned cars and other housing related problems such as vandalism, fly tipping and graffiti. They help to raise resident's awareness of crime and security. They work closely with the

Community Wardens and the Police to help improve the environment and security of Wealden's Housing Estates.

### **DROP IN CENTRES**

**Clued-up info** based in Crowborough, East Sussex is an Information Shop for young people aged between 11 and 25 years. They provide advice and information on any subject. These include education, training and employment, sex and relationships, family problems, justice and equality, health, housing and welfare, money, sport, leisure and travel, mental health and depression, bullying, alcohol and drug awareness, as well as counselling and liaising with other agencies. If they don't know the answer, they guarantee to find out for you!

Call on: **01892 661990**

**Info Point**, Hailsham provides counselling, information & support for young people including drug and alcohol issues, the address is 1 Market Square, Hailsham. 01323 843377

### **DETACHED YOUTH WORKERS**

These mobile projects engage with young people throughout the District to raise awareness of substance misuse and other related problems, they refer young people to specialist services where appropriate. Their aims are to reduce the number of incidents of substance misuse, drunkenness and disturbance.

### **WEALDEN MEDIATION SERVICE**

If you have had problems with your neighbours, you will understand how delicate negotiations must be. But fear not, a service is available that can help you resolve your difficulties for free!

The WEALDEN MEDIATION SERVICE has already helped in 450 disputes to deal with issues including: noise, boundaries, children's behaviour, anti-social behaviour, abusive behaviour, animals, parking and damage to property. Mediators, acting as an impartial third party, offer a listening ear and an opportunity to sort things out with your neighbour. Call **01323 442781** for details.

### **ENVIRONMENTAL POLLUTION CONTROL OFFICE**

If you wish to report noise pollution, call the **01323 443555**. Don't be anti-social - keep noise down. If someone complains, be reasonable and reduce the noise. STEREOs, TELEVISIONS AND RADIOS - Keep the volume to a reasonable level -especially at night. Avoid putting speakers on party walls, or on the floor in flats. CARS Keep music down and the windows closed. Don't over rev your engine.

IN THE STREET - Avoid shouting - especially at night when others will be sleeping.

*(Taken from the Safer Wealden Partnership website)*