

**Wealden Quarterly Management Information:**  
**2011/12 Q2: July '11 – September '11**  
**Requested by: David Kemp**



**Introduction**

This report will look at the number of crimes, as listed in the tables below, reported in Wealden in each rolling year (October to September) between 2006/07 and 2010/11. It will then go on to look at the iQuanta data for Q1 and Q2 of 2011/12 as well the most similar group (MSG) data for the current quarter (Q2) to look at how Wealden is performing in line with the other CDRPs

The numbers of crimes have been taken from the Sussex Police CDRP Performance Data, with the figure for each performance year being taken from the month of September. However, please note that some of the Home Office Offence Categories i.e. Serious Violence (NI15) and Assault with Less Serious injury (NI20) do not appear in the earlier data sets and so will only be included where appropriate.

**Rolling Years: 2006/07 to 2010/11**

As the table below shows, total crime in Wealden is at a 5 year low, and has seen a significant reduction of 2064 (-30.7%) when compared to 2006/07 when the highest number of crimes in the 5 year period were reported. In the table below, the highest numbers in the 5 year period are shown in red, while the lowest numbers are shown in green.

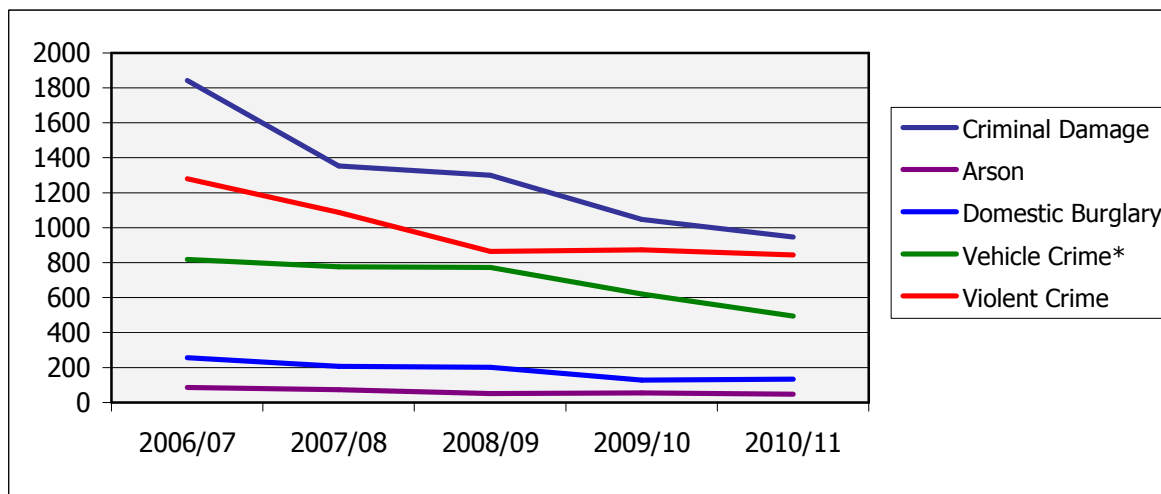
**Table 1: Rolling Year Comparisons: October to September: 2006/07 to 2010/11**

Crime Type	ROLLING YEAR: OCTOBER TO SEPTEMBER				
	2006/07	2007/08	2008/09	2009/10	2010/11
Total Crime	<b>6713</b>	5622	5518	4765	<b>4649</b>
Criminal Damage	<b>1842</b>	1352	1301	1048	<b>946</b>
Arson	<b>86</b>	73	51	55	<b>47</b>
Domestic Burglary	<b>257</b>	208	201	<b>129</b>	134
Vehicle Crime*	<b>819</b>	777	773	621	<b>494</b>
Violent Crime	<b>1281</b>	1088	864	874	<b>844</b>
Serious Violence	-	13	19	17	14
Assault with Less Serious Injury	-	400	317	300	253

\* Includes Theft of a Vehicle, Theft from a Vehicle and Vehicle Interference and Tampering

With the exception of Domestic Burglary, all crime types are currently at their lowest level. The numbers of reports of Criminal Damage has moved in a downwards direction since 2006/07, having seen a reduction of 896 (-48.6%) when compared to that period. Violent Crime has fallen by 34.1% when compared to 2006/07 whilst Vehicle Crime has fallen by 39.7%. Domestic Burglary has reduced by almost half (-47.8%) since 2006/07 but has seen a slight increase of 5 crimes (3.9%) since 2009/10.

**Graph 1: 2006/07 to 2010/11 Rolling Year Comparison: October to September**



\* Includes Theft of a Vehicle, Theft from a Vehicle and Vehicle Interference and Tampering

As stated previously, Serious Violence and Assault with Less Serious Injury do not appear in the earlier data sets, and so it is not possible to compare the data with all of the previous years. However, although the numbers of reports of Serious Violence rose slightly during the last quarter of 2010/11, they have fallen back to the low level that can broadly be seen throughout the 12 month period. Reports of Assault with Less Serious Injury have also reduced but have not fluctuated greatly for the last 4 quarters.

**Table 2: Quarterly Comparisons: 2010/11 and 2011/12**

Crime Type	2010/11		2011/12	
	Q3	Q4	Q1	Q2
Serious Violence	3	6	2	3
Assault with Less Serious Injury	60	66	66	61

**iQuanta: Current and Previous Quarter Data**

Please find below the most recently published iQuanta figures for Q1 of 2011/12 and Q2 of 2011/12.

As the table below shows, total crime in Wealden has fallen by 4.4% when compared to the previous quarter. Domestic Burglary has risen by 51.9% (+14 crimes) since Q1. The only 2 crime types to see a decrease were Criminal Damage and Vehicle Crime. Although Most Serious Violence has increased by 50% since Q1 this is an actual increase of only 1 crime.

**Table 3: Q1 2011/12 and Q2 2011/12 Comparison**

Crime Type	Previous Quarter (Q4)	Current Quarter (Q1)	Variance	%
Total Crime	1195	1142	-53	-4.4%
Criminal Damage (exc 59)	271	220	-51	-18.8%
Arson	14	14	0	0.0%
Domestic Burglary	27	41	14	51.9%
Vehicle Crime (inc Vehicle Interference)	113	108	-5	-4.4%
Most Serious Violence (NI15)	2	3	1	50.0%
Assault with Less Serious Injury (NI20)	66	61	-5	-7.6%

### **iQuanta Most Similar Group (MSG) Data**

Please find below the MSG tables and graphs for the crimes of interest in the most recent quarter (July to September '11).

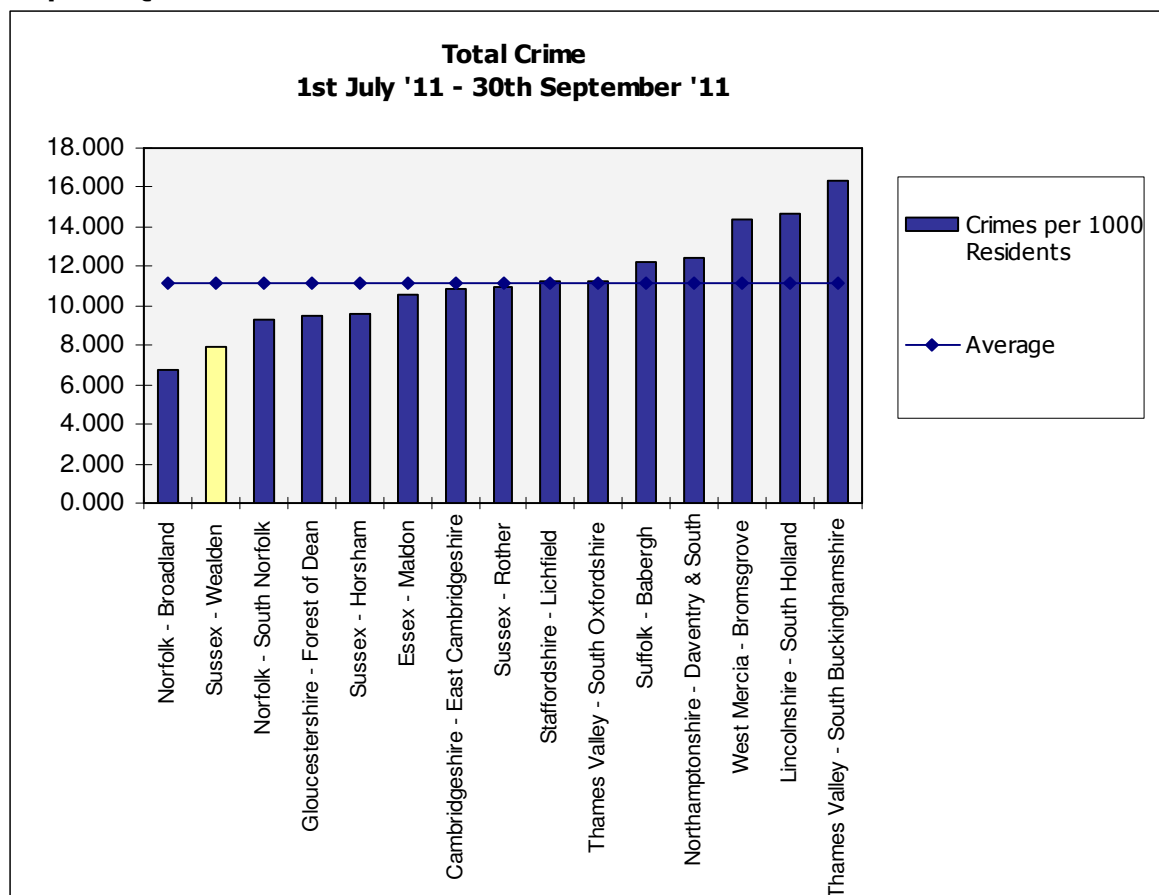
#### **Total Crime**

Wealden has remained in 2<sup>nd</sup> place in its MSG with 7.952 crimes per 1000 residents. It also sits below the group average of 11.199.

**Table 4: iQuanta MSG: Total Crime: July to September '11**

<b>CDRP</b>	<b>Crimes per 1000 Residents</b>
Norfolk - Broadland	6.776
<b>Sussex - Wealden</b>	<b>7.925</b>
Norfolk - South Norfolk	9.295
Gloucestershire - Forest of Dean	9.448
Sussex - Horsham	9.571
Essex - Maldon	10.547
Cambridgeshire - East Cambridgeshire	10.832
Sussex - Rother	10.944
Staffordshire - Lichfield	11.248
Thames Valley - South Oxfordshire	11.291
Suffolk - Babergh	12.237
Northamptonshire - Daventry & South	12.436
West Mercia - Bromsgrove	14.426
Lincolnshire - South Holland	14.699
Thames Valley - South Buckinghamshire	16.302

**Graph 2: iQuanta MSG: Total Crime**



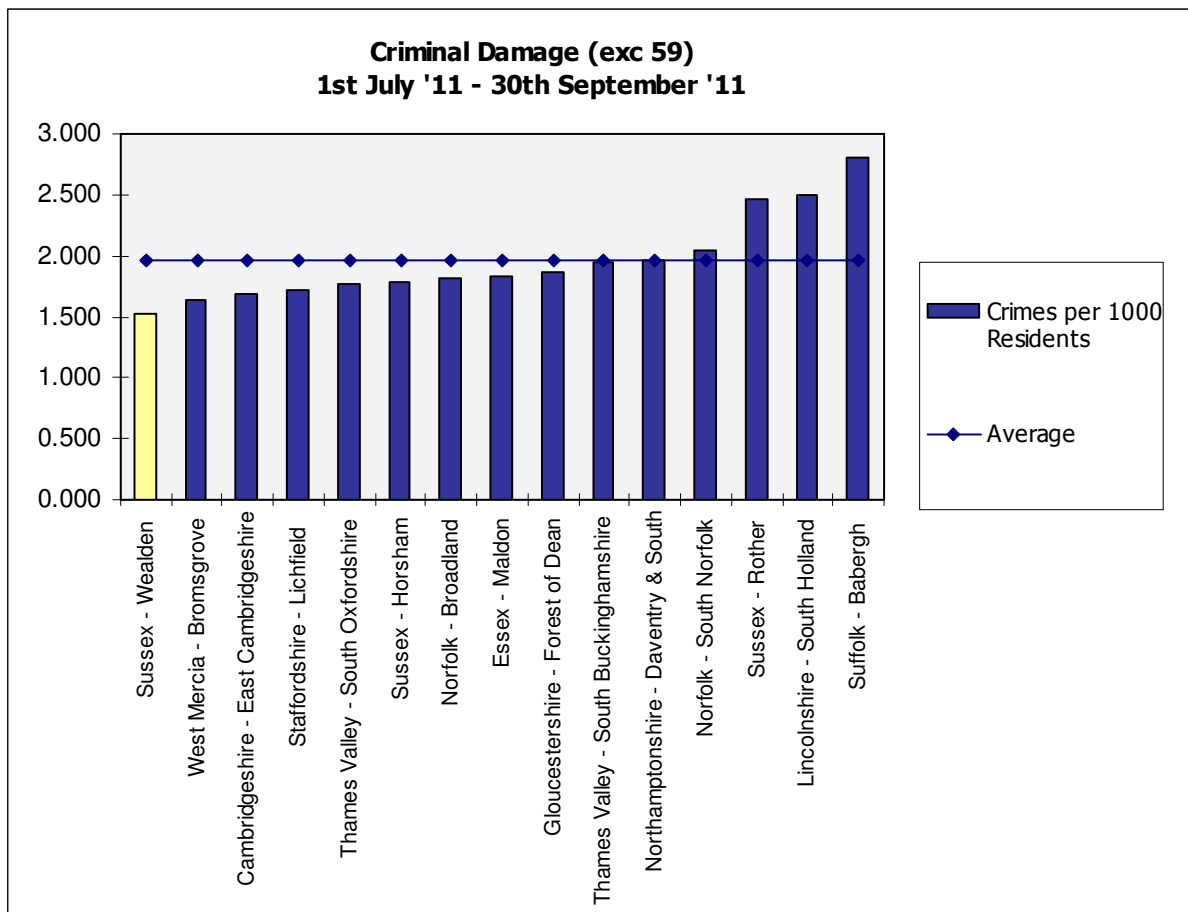
Criminal Damage (exc 59)

When looking at Criminal Damage (excluding Threat or Possession with intent to commit Criminal Damage) between July and September '11, Wealden is now sitting top in the MSG, an improvement of 4 places in comparison with the previous quarter. There were 1.527 crimes per 1000 residents, As the graph below shows, the number of crimes in Wealden is also lower than the group average of 1.956 crimes per 1000 residents.

**Table 5: iQuanta MSG: Criminal Damage (exc 59): July to September '11**

CDRP	Crimes per 1000 Residents
<b>Sussex - Wealden</b>	<b>1.527</b>
West Mercia - Bromsgrove	1.637
Cambridgeshire - East Cambridgeshire	1.684
Staffordshire - Lichfield	1.713
Thames Valley - South Oxfordshire	1.771
Sussex - Horsham	1.781
Norfolk - Broadland	1.811
Essex - Maldon	1.834
Gloucestershire - Forest of Dean	1.870
Thames Valley - South Buckinghamshire	1.941
Northamptonshire - Daventry & South	1.961
Norfolk - South Norfolk	2.036
Sussex - Rother	2.472
Lincolnshire - South Holland	2.495
Suffolk - Babergh	2.805

**Graph 3: iQuanta MSG: Criminal Damage (exc 59)**



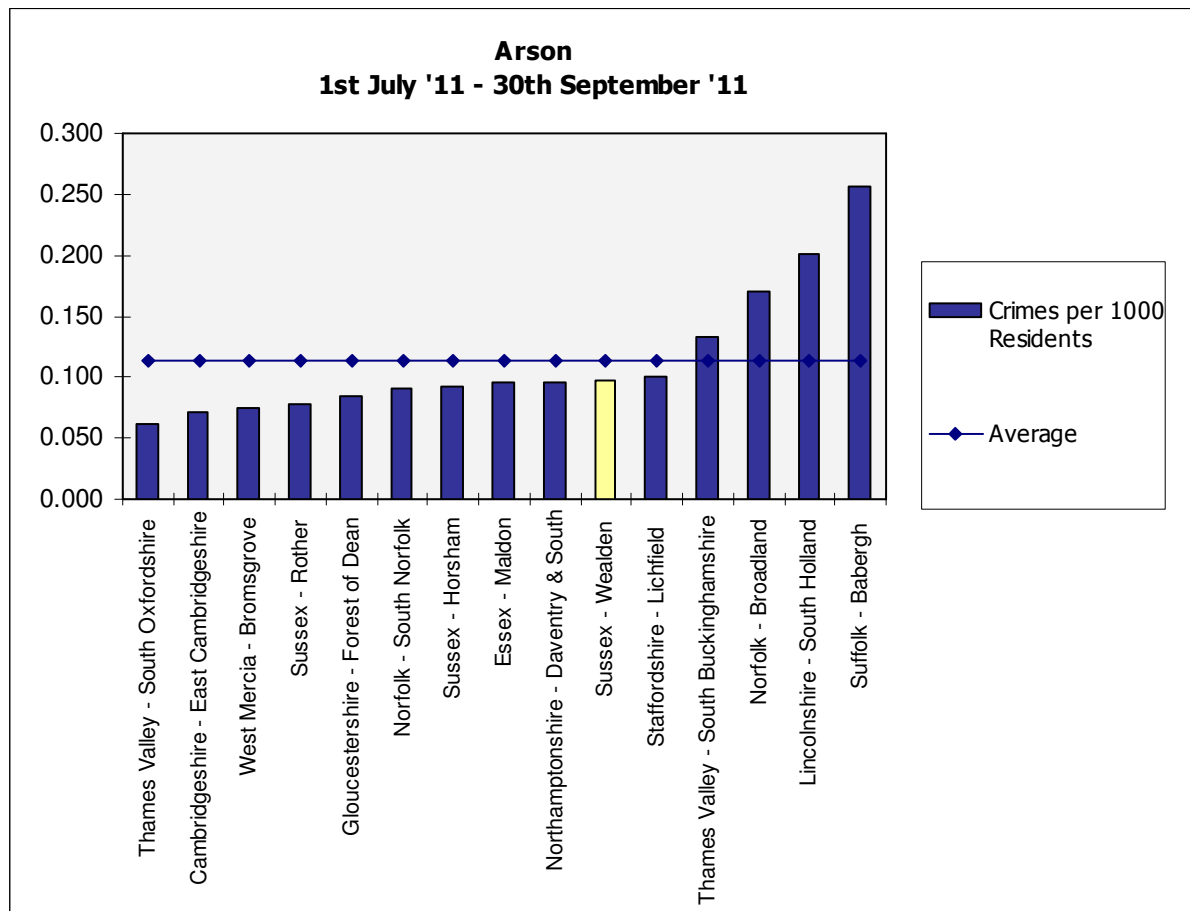
## Arson

In the quarter, there were 0.097 reported Arsons in Wealden per 1000 residents, which places the CDRP 8<sup>th</sup> in the group, a drop of 2 places since the previous quarter. The number of arsons in Wealden is also below the group average of 0.113 per 1000 residents.

**Table 6: iQuanta MSG: Arson: July to September '11**

CDRP	Crimes per 1000 Residents
Thames Valley - South Oxfordshire	0.061
Cambridgeshire - East Cambridgeshire	0.071
West Mercia - Bromsgrove	0.075
Sussex - Rother	0.078
Gloucestershire - Forest of Dean	0.084
Norfolk - South Norfolk	0.090
Sussex - Horsham	0.092
Essex - Maldon	0.095
Northamptonshire - Daventry & South	0.095
<b>Sussex - Wealden</b>	<b>0.097</b>
Staffordshire - Lichfield	0.101
Thames Valley - South Buckinghamshire	0.133
Norfolk - Broadland	0.170
Lincolnshire - South Holland	0.201
Suffolk - Babergh	0.257

**Graph 4: iQuanta MSG: Arson**



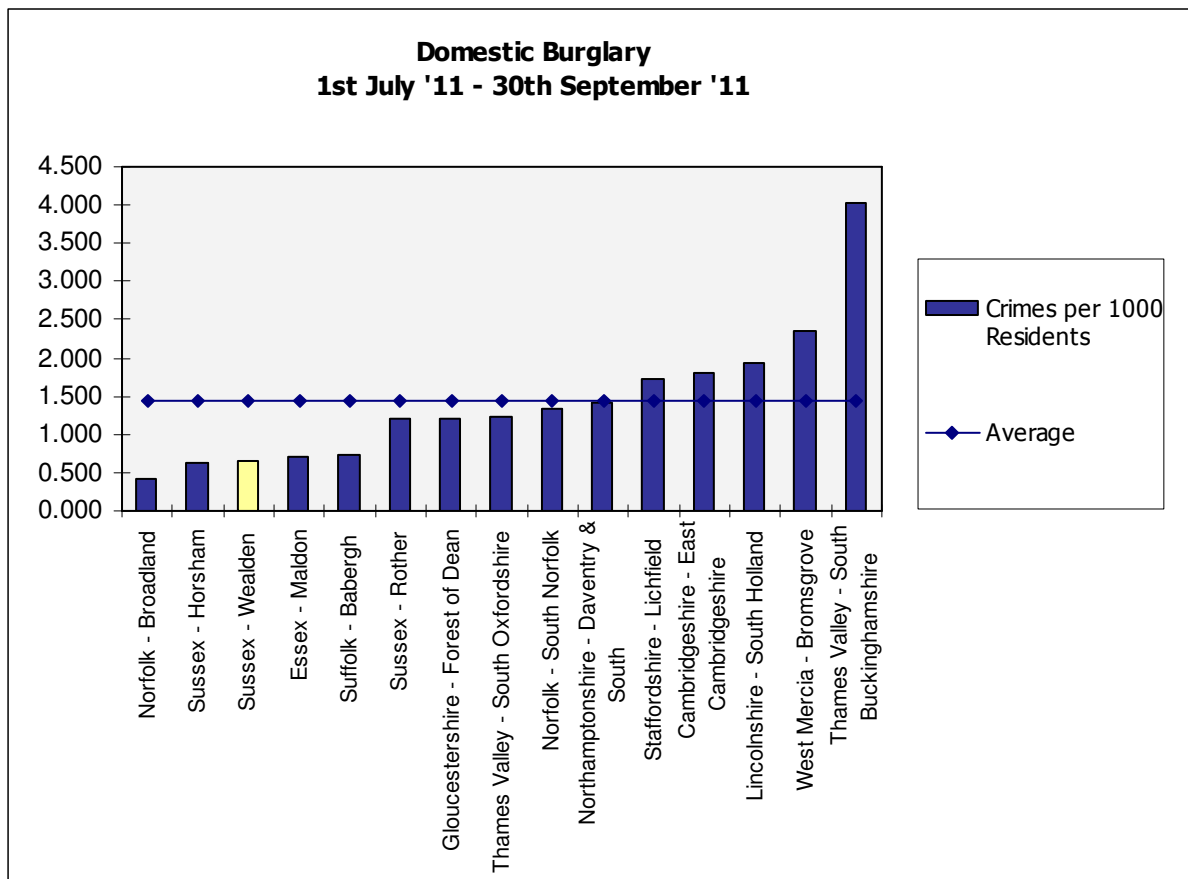
### Domestic Burglary

The 3 months of data shows that Wealden is sitting 3<sup>rd</sup> in the MSG with 0.663 Domestic Burglaries per 1000 residents. The number is also significantly lower than the group average of 1.187 crimes per 1000 residents. However, please note that the group average will have been affected by the higher number of crimes in South Buckinghamshire.

**Table 7: iQuanta MSG: Domestic Burglary: July to September '11**

CDRP	Crimes per 1000 Residents
Norfolk - Broadland	0.428
Sussex - Horsham	0.635
<b>Sussex - Wealden</b>	<b>0.663</b>
Essex - Maldon	0.717
Suffolk - Babergh	0.741
Sussex - Rother	1.195
Gloucestershire - Forest of Dean	1.213
Thames Valley - South Oxfordshire	1.238
Norfolk - South Norfolk	1.334
Northamptonshire - Daventry & South	1.405
Staffordshire - Lichfield	1.720
Cambridgeshire - East Cambridgeshire	1.806
Lincolnshire - South Holland	1.938
West Mercia - Bromsgrove	2.343
Thames Valley - South Buckinghamshire	4.023

**Graph 5: iQuanta MSG: Domestic Burglary**



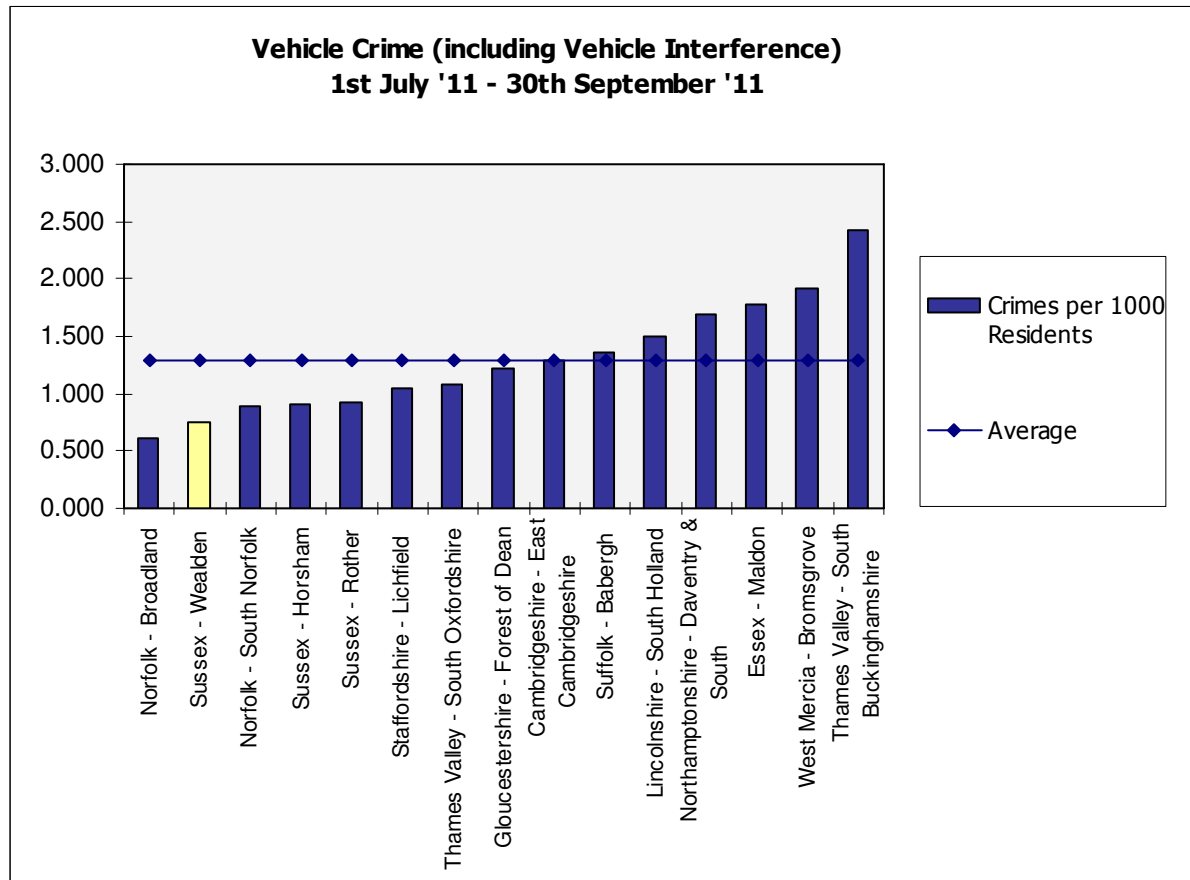
Vehicle Crime (including Vehicle Interference)

When looking at Vehicle Crime including Vehicle Interference, Wealden has remained in 2<sup>nd</sup> place in its MSG with 0.750 crimes per 1000 residents. The district also sits below the group average of 1.293 crimes per 1000 residents.

**Table 8: iQuanta MSG: Vehicle Crime (inc Vehicle Interference): July to September '11**

CDRP	Crimes per 1000 Residents
Norfolk - Broadland	0.615
<b>Sussex - Wealden</b>	<b>0.750</b>
Norfolk - South Norfolk	0.887
Sussex - Horsham	0.910
Sussex - Rother	0.924
Staffordshire - Lichfield	1.054
Thames Valley - South Oxfordshire	1.084
Gloucestershire - Forest of Dean	1.219
Cambridgeshire - East Cambridgeshire	1.283
Suffolk - Babergh	1.367
Lincolnshire - South Holland	1.502
Northamptonshire - Daventry & South	1.693
Essex - Maldon	1.771
West Mercia - Bromsgrove	1.926
Thames Valley - South Buckinghamshire	2.416

**Graph 6: iQuanta MSG: Vehicle Crime (inc. Vehicle Interference)**



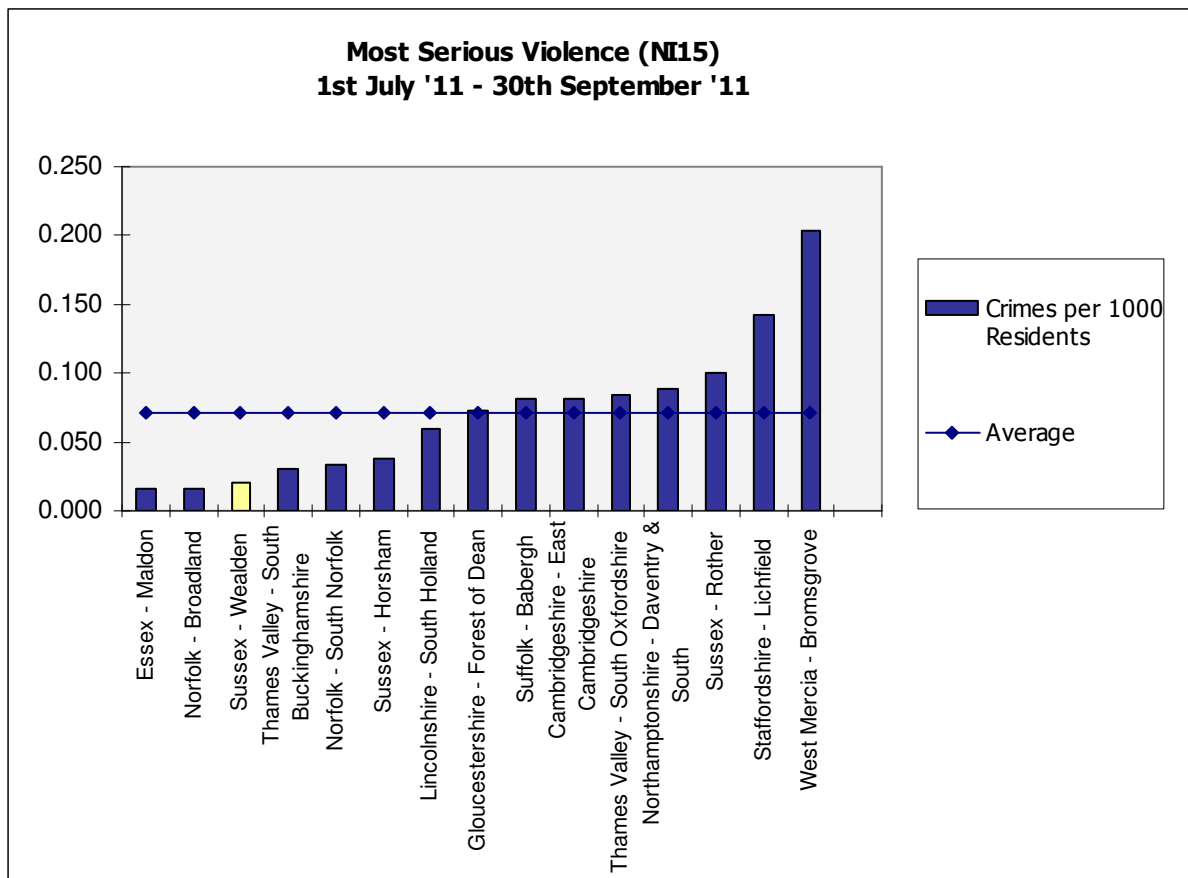
Most Serious Violence (NI15)

Wealden has dropped 2 places to 3<sup>rd</sup> in the Most Similar Group with 0.021 crimes per 1000 residents. It is also significantly below the group average of 0.071 crimes per 1000 residents.

**Table 9: iQuanta MSG: Most Serious Violence (NI15): July to September '11**

CDRP	Crimes per 1000 Residents
Essex - Maldon	0.016
Norfolk - Broadland	0.016
<b>Sussex - Wealden</b>	<b>0.021</b>
Thames Valley - South Buckinghamshire	0.030
Norfolk - South Norfolk	0.033
Sussex - Horsham	0.038
Lincolnshire - South Holland	0.059
Gloucestershire - Forest of Dean	0.072
Suffolk - Babergh	0.082
Cambridgeshire - East Cambridgeshire	0.082
Thames Valley - South Oxfordshire	0.084
Northamptonshire - Daventry & South	0.089
Sussex - Rother	0.100
Staffordshire - Lichfield	0.142
West Mercia - Bromsgrove	0.203

**Graph 7: iQuanta MSG: Most Serious Violence (NI15)**



### Assault with Less Serious Injury (NI20)

The current quarter data shows that there were 0.423 crimes per 1000 residents, and Wealden have retained their position at the top of the MSG. Wealden's recorded crime is significantly below the group average of 0.728 crimes per 1000 residents.

**Table 10: iQuanta MSG: Assault with Less Serious Injury (NI20): July to September '11**

CDRP	Crimes per 1000 Residents
<b>Sussex - Wealden</b>	<b>0.423</b>
Norfolk - Broadland	0.453
Cambridgeshire - East Cambridgeshire	0.459
Sussex - Horsham	0.489
Thames Valley - South Oxfordshire	0.565
Norfolk - South Norfolk	0.608
Thames Valley - South Buckinghamshire	0.697
Sussex - Rother	0.735
Essex - Maldon	0.743
Staffordshire - Lichfield	0.770
Gloucestershire - Forest of Dean	0.893
Suffolk - Babergh	0.912
Northamptonshire - Daventry & South	0.960
Lincolnshire - South Holland	0.970
West Mercia - Bromsgrove	1.241

**Graph 8: iQuanta MSG: Assault with Less Serious Injury (NI20)**

