

---

# Building our Core Strategy

---



David Phillips ,  
Head of policy & environment  
Wealden District Council  
April 2007

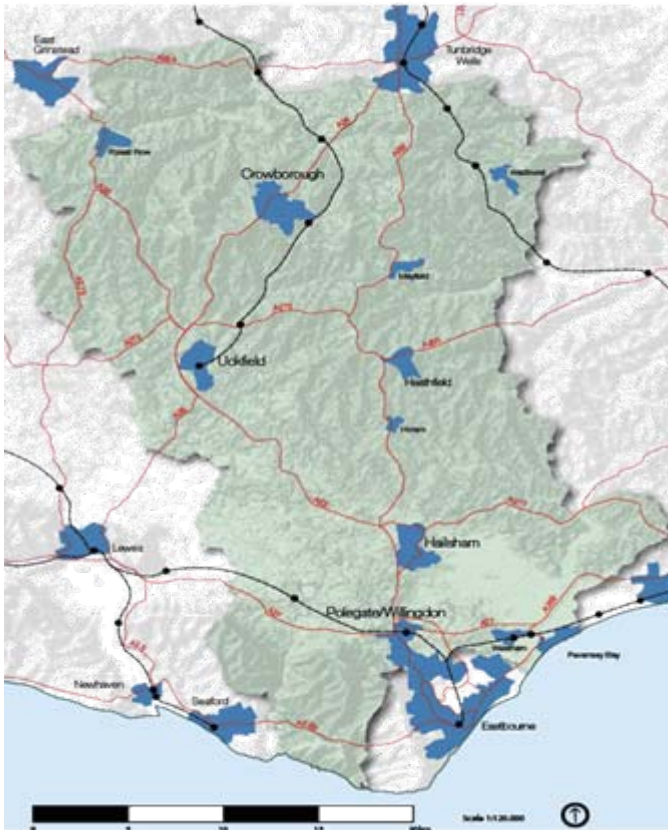


**Wealden**  
District Council  
[www.wealden.gov.uk](http://www.wealden.gov.uk)

# Towards a New Plan – Involving parishes, involving Stakeholders

- What you have told us already
  - Key issues –Affordable housing, infrastructure,transport;
  - Also: environmental protection, local distinctiveness, high quality design

# Next Steps - Early Engagement to Issues & Options Consultation

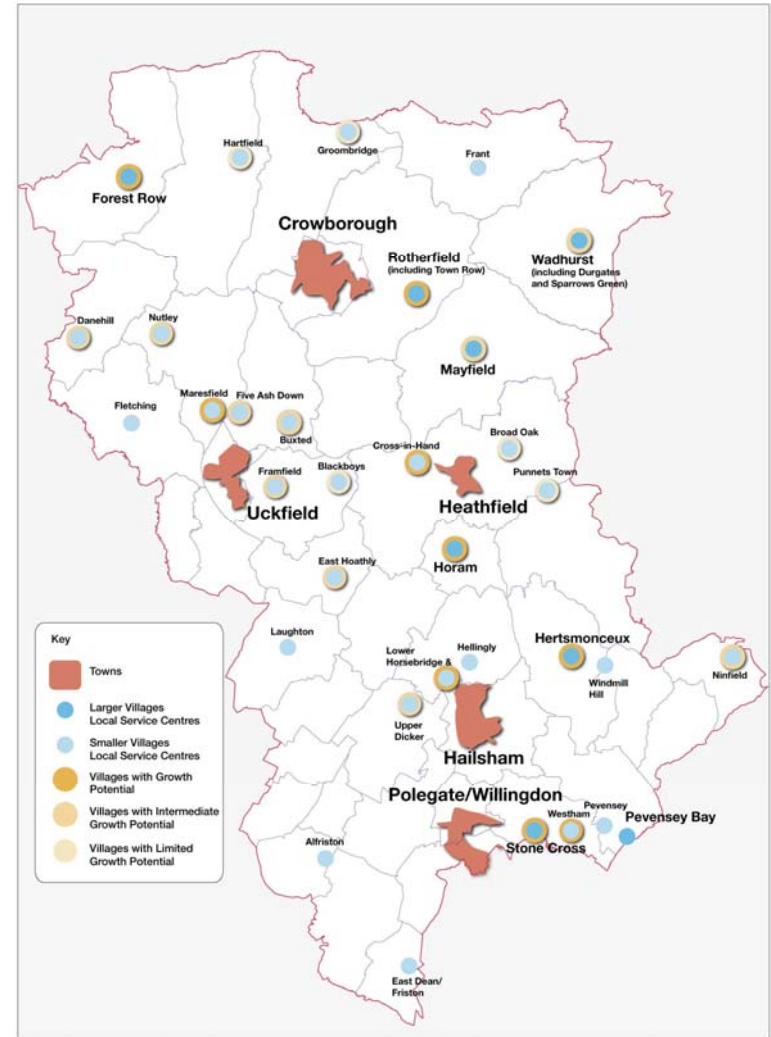


- Parish Planning Conference, parish plans, Town Healthchecks
- Ongoing technical work
- Today's LSP Event
- More Town/Parish Council Engagement after election
- To WDC Members then July-August focused (6 week) consultation on Issues & Options Paper



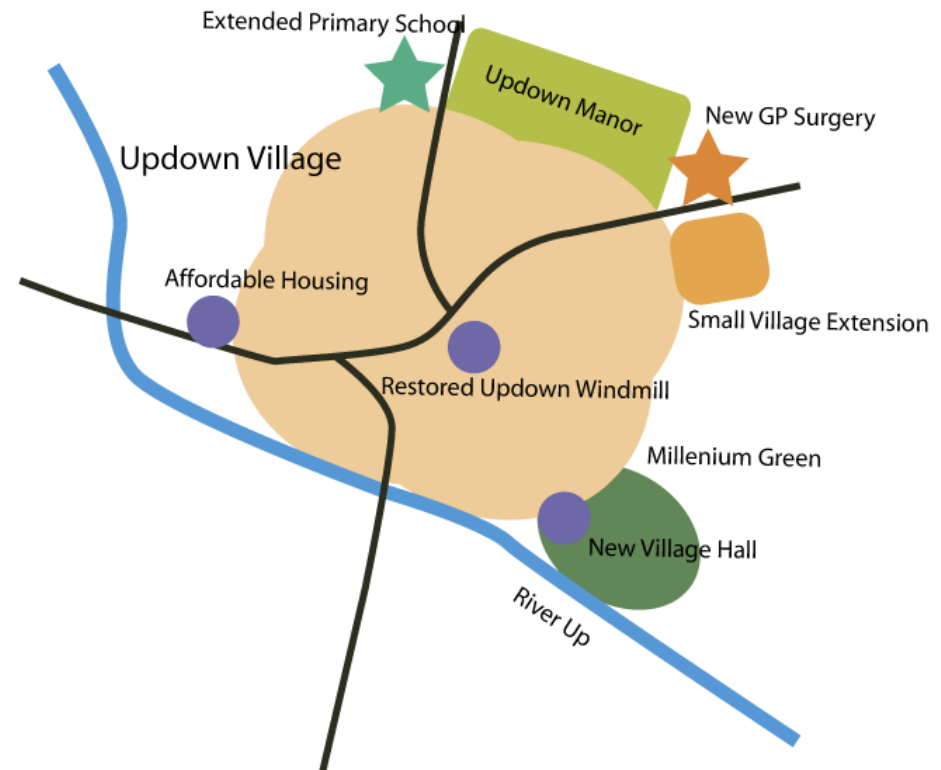
# A Settlement Strategy

- What you have told us already
- Support development of a settlement strategy approach
  - Amount of local services: Local Service Centres – large and small
  - Plus accessibility to towns and public transport
  - Plus availability and assessment of least sensitive sites
- Identify settlements with Growth potential



# You supported a more even Urban: Rural Split

- You told us cap for villages-10-15%
- Proportional to size of settlement
- Good ideas but....
- Lack of good village sites means likely to be less than 20% rural
- Some villages have potential to grow- for others its hard – so 15% cap across the board may be impractical





**Wealden**  
District Council  
[www.wealden.gov.uk](http://www.wealden.gov.uk)

# Workshops

---